

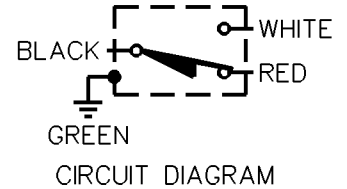
**MICRO SWITCH**  
a Honeywell Division

FED. MFG. CODE 91929

**MINIATURE PRECISION  
LIMIT SWITCH**

CATALOG LISTING

**914CE18-6**



914CE18-6

**M**

DRAWING  
NUMBER

3

ISSUE

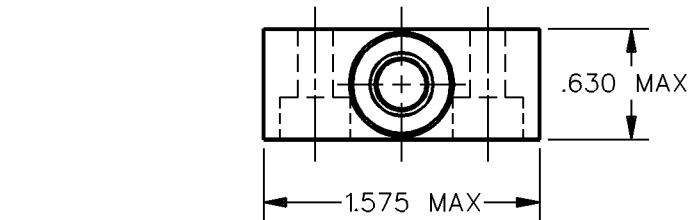
REPLACES  
RELEASE NO. PR-7324

CHECK

REVISIONS

A	CO-69061
S A V	4 OCT 91

CHECK



.071 MAX  
PRETRAVEL

.980 ± .039  
OPERATING  
POSITION

2.480 MAX

72.000 MIN

2X Ø .200 ± .010  
MOUNTING HOLES  
(Ø .40 C'BORE  
.24 DEEP)

.300 ± .010

1.732 MAX

P.V.C. SHEATHED CABLE  
18/4 S.J.T.O.

.984 ± .010

Ø.280 STAINLESS  
STEEL PLUNGER

NEOPRENE  
SEAL

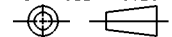
**NOTES**

1 - ZINC HOUSING FINISHED WITH GRAY PAINT

ANSI Y14.5M-1982 APPLIES

THIS DRAWING COVERS A PROPRIETARY ITEM AND IS THE PROPERTY OF MICRO SWITCH, A DIVISION OF HONEYWELL. THIS DRAWING IS NOT TO BE COPIED OR USED WITHOUT THE APPROVAL OF MICRO SWITCH.

THIRD ANGLE PROJECTION



CHARACTERISTICS	ELECTRICAL DATA	SCALE FULL	DO NOT SCALE PRINT
OPERATING FORCE — — — — 5 LB MAX	CONTACT ARRANGEMENT S P D T	<b>UNLESS OTHERWISE SPECIFIED TOLERANCES ARE</b>	ONE PLACE (.0) ± .030
DIFFERENTIAL TRAVEL — — — .004 MAX	5A - 250 VAC		TWO PLACE (.00) ± .015
OVERTRAVEL — — — — .118 MIN	1/10HP - 125 OR 250 VAC		THREE PLACE (.000) ± .005
			ANGLES ±
		WEIGHT	

DDM/CAD

DRAWN

S A V 4 OCT 91